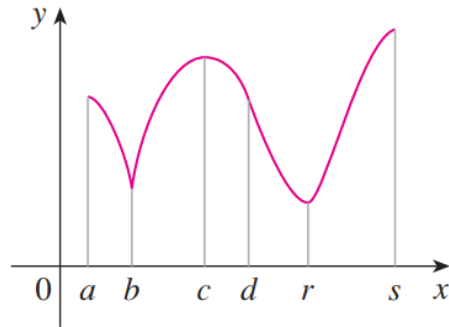


Exercise 3

For each of the numbers a , b , c , d , r , and s , state whether the function whose graph is shown has an absolute maximum or minimum, a local maximum or minimum, or neither a maximum nor a minimum.



Solution

The function has a local maximum at c . The function has a local minimum at b and r . The absolute minimum is at r , and the absolute maximum is at s . There's neither a maximum nor a minimum at a and d . a and s are not local maxima because they're at the endpoints.